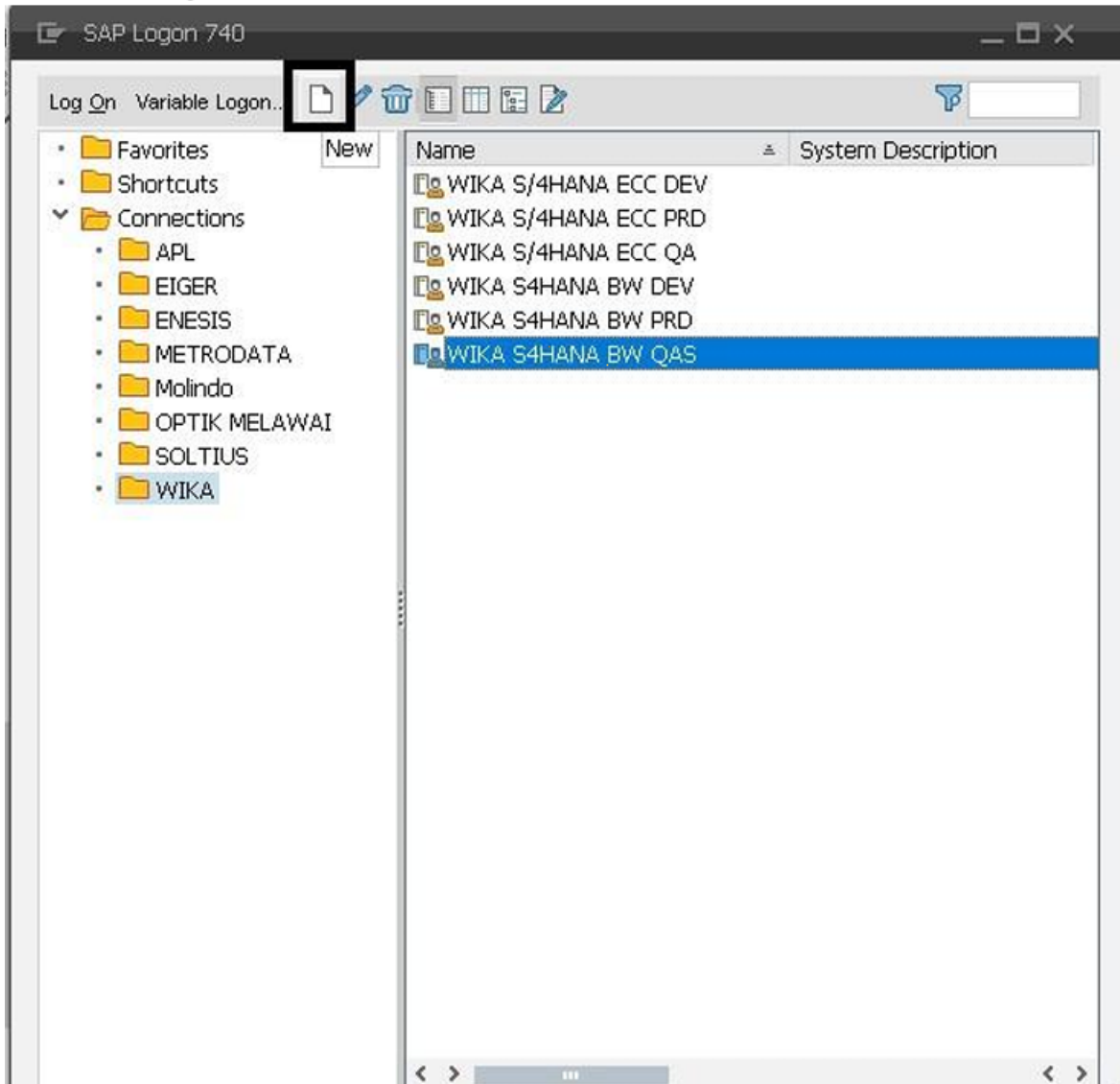
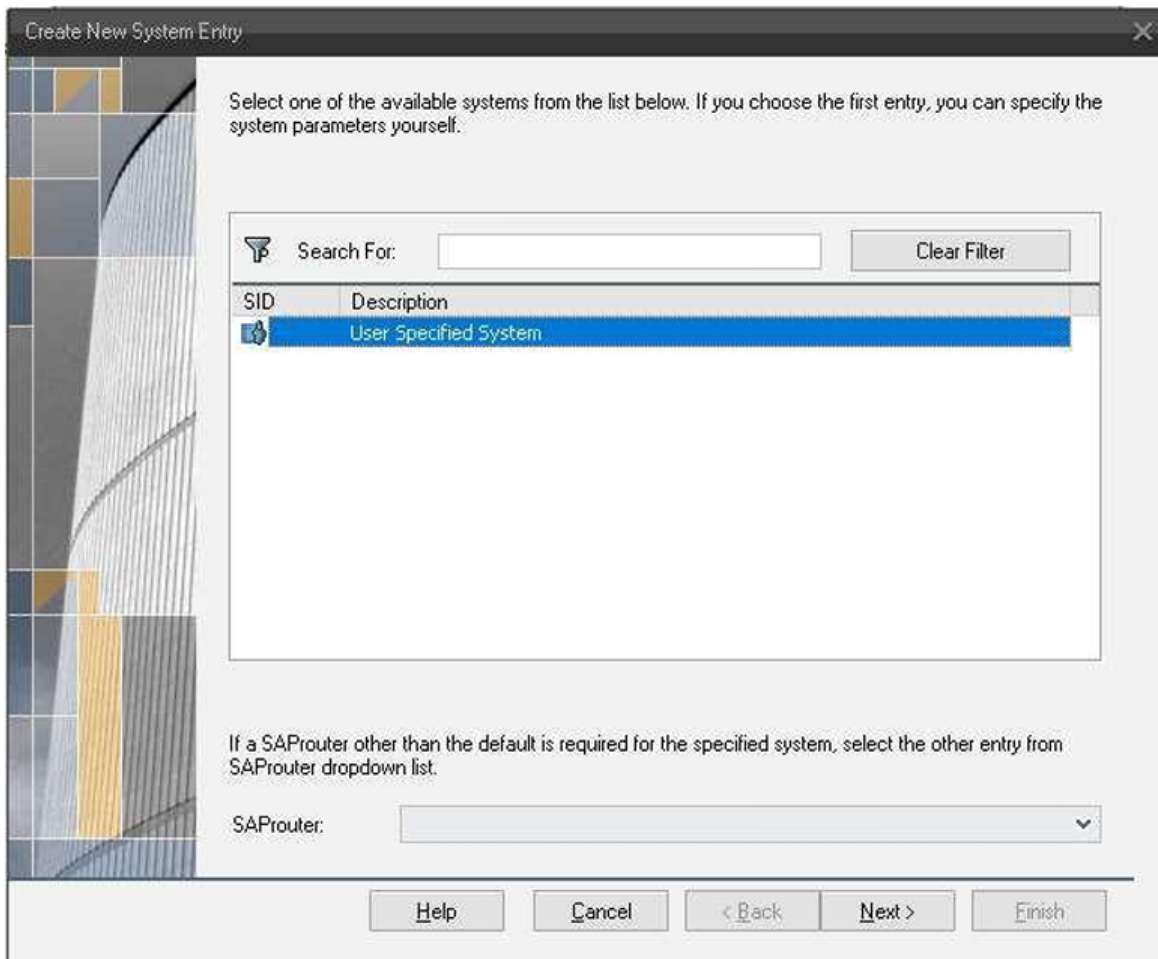


Membuat Koneksi

1. Buka SAP Logon. Klik New untuk add alamat server BW PROD.



2. Create New System Entry. Klik Next



3. Input alamat Server BW PROD. Description, Application Server, Instance Number, System ID, SAProuter String. Jika sudah terisi semua Klik Finish

System Entry Properties [X]

Connection | Network | Code Page

Choose the connection type and change the system parameters as required. Delete the old description if you want the system to propose a description. The 'OK' button is activated once you have entered all required input data.

Connection Type: Custom Application Server

System Connection Parameters

Description:	BW PRD
Application Server:	10.250.5.22
Instance Number:	60
System ID:	WB5
SAProuter String:	/H/34.101.165.46/S/3299/W/WIKA2022

OK Cancel Help

Revision #2

Created 13 November 2025 06:53:13 by NURHOLIFAH

Updated 13 November 2025 07:34:34 by NURHOLIFAH