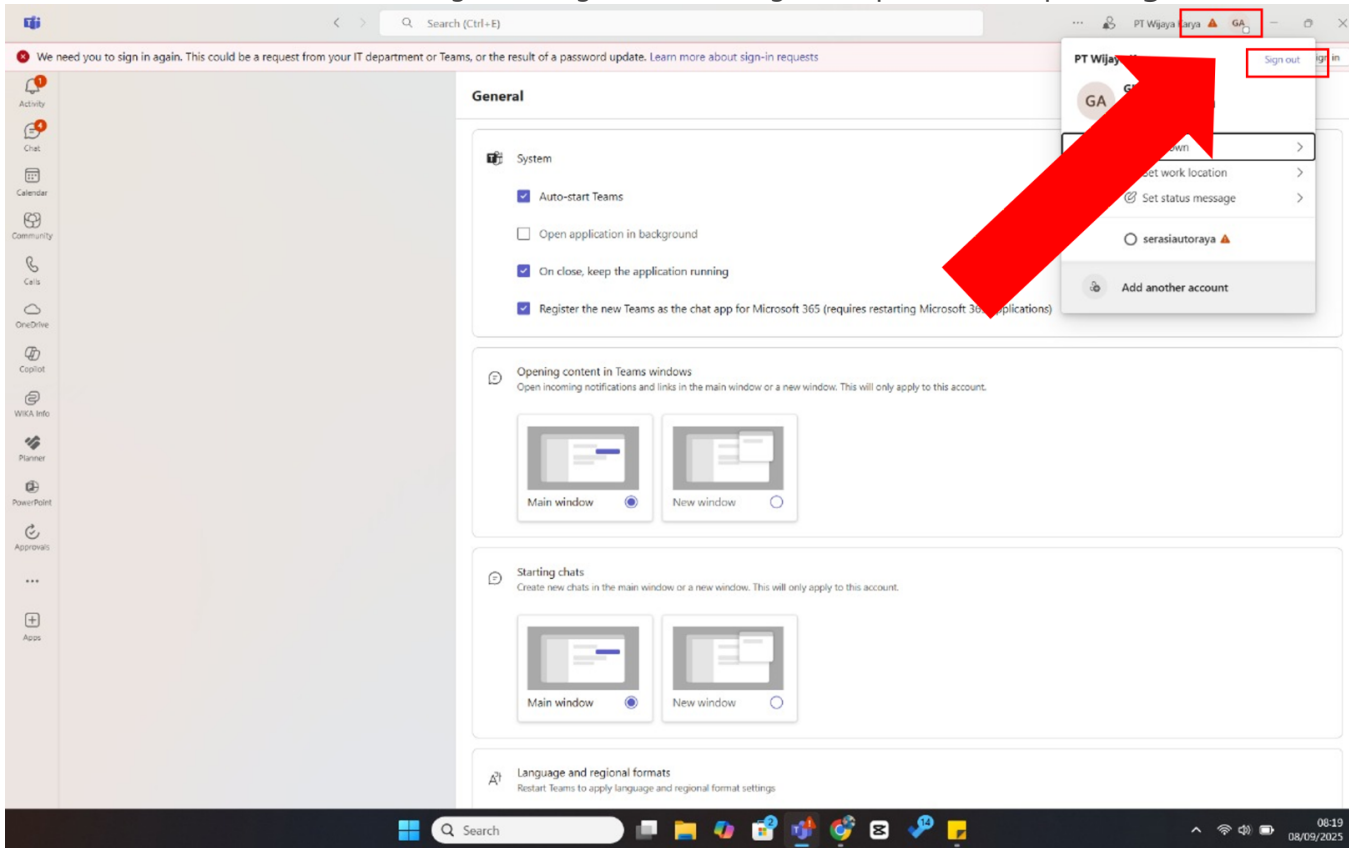
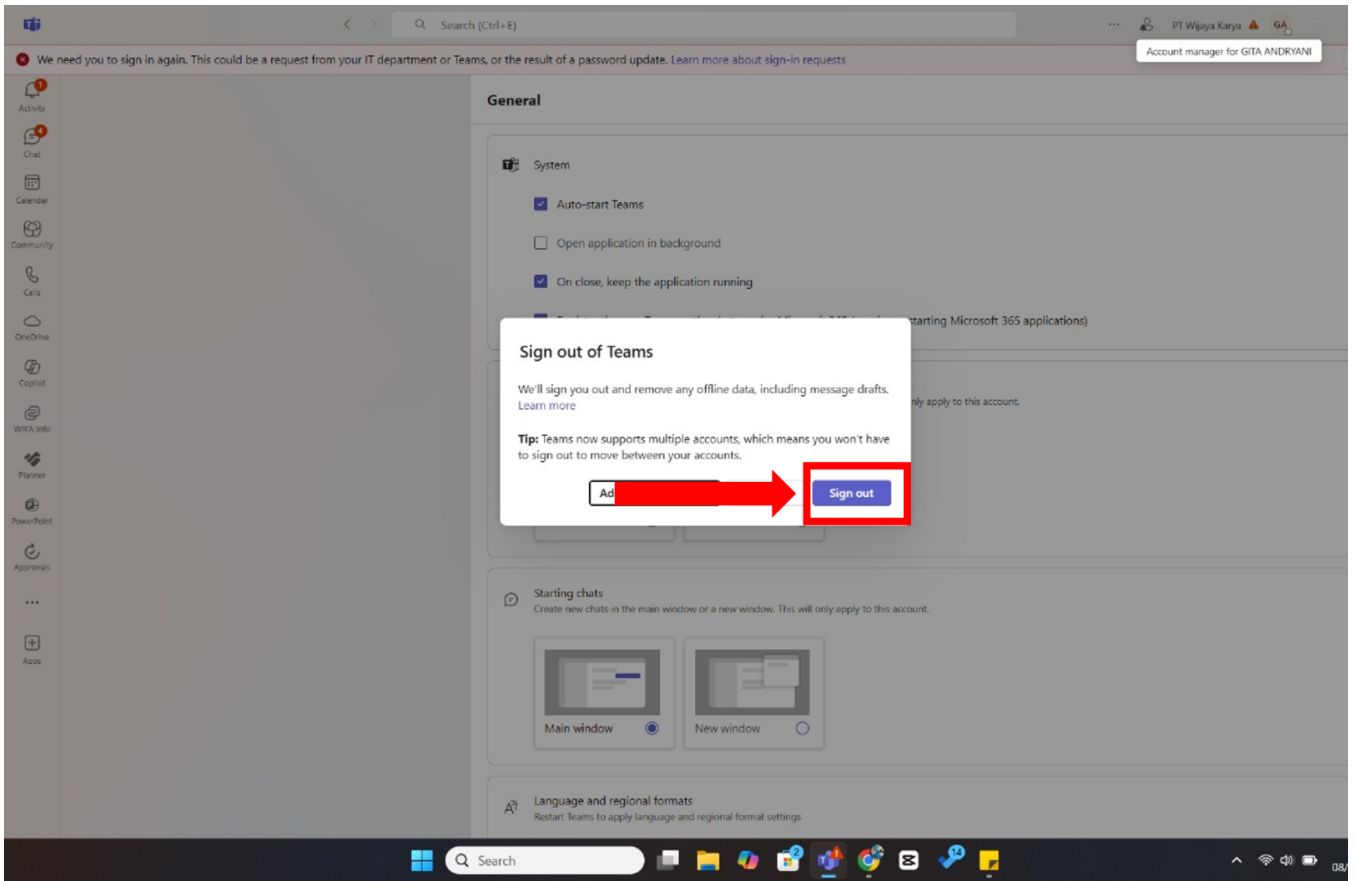


# Cara Re-Login Ms. Teams

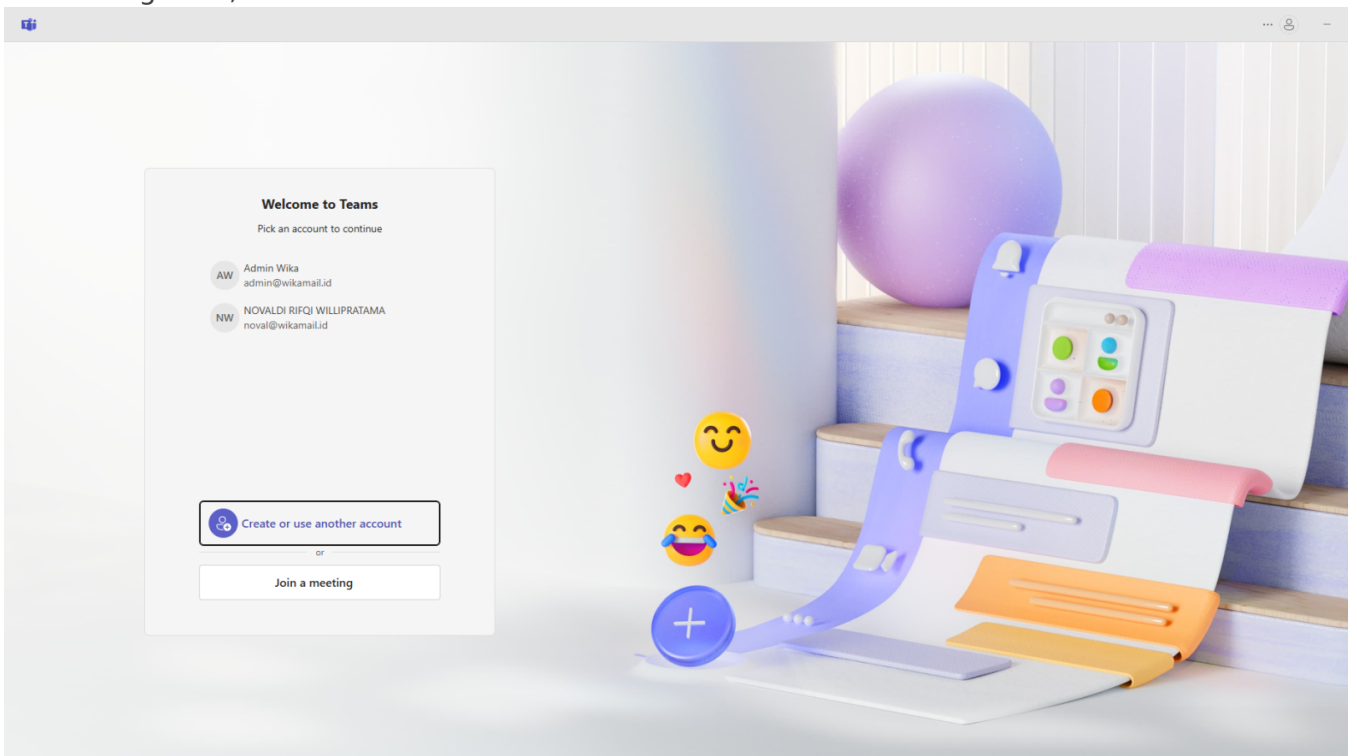
1. Buka Ms. Teams dan lakukan logout dengan cara mengakses profile, dan pilih **Sign Out**.



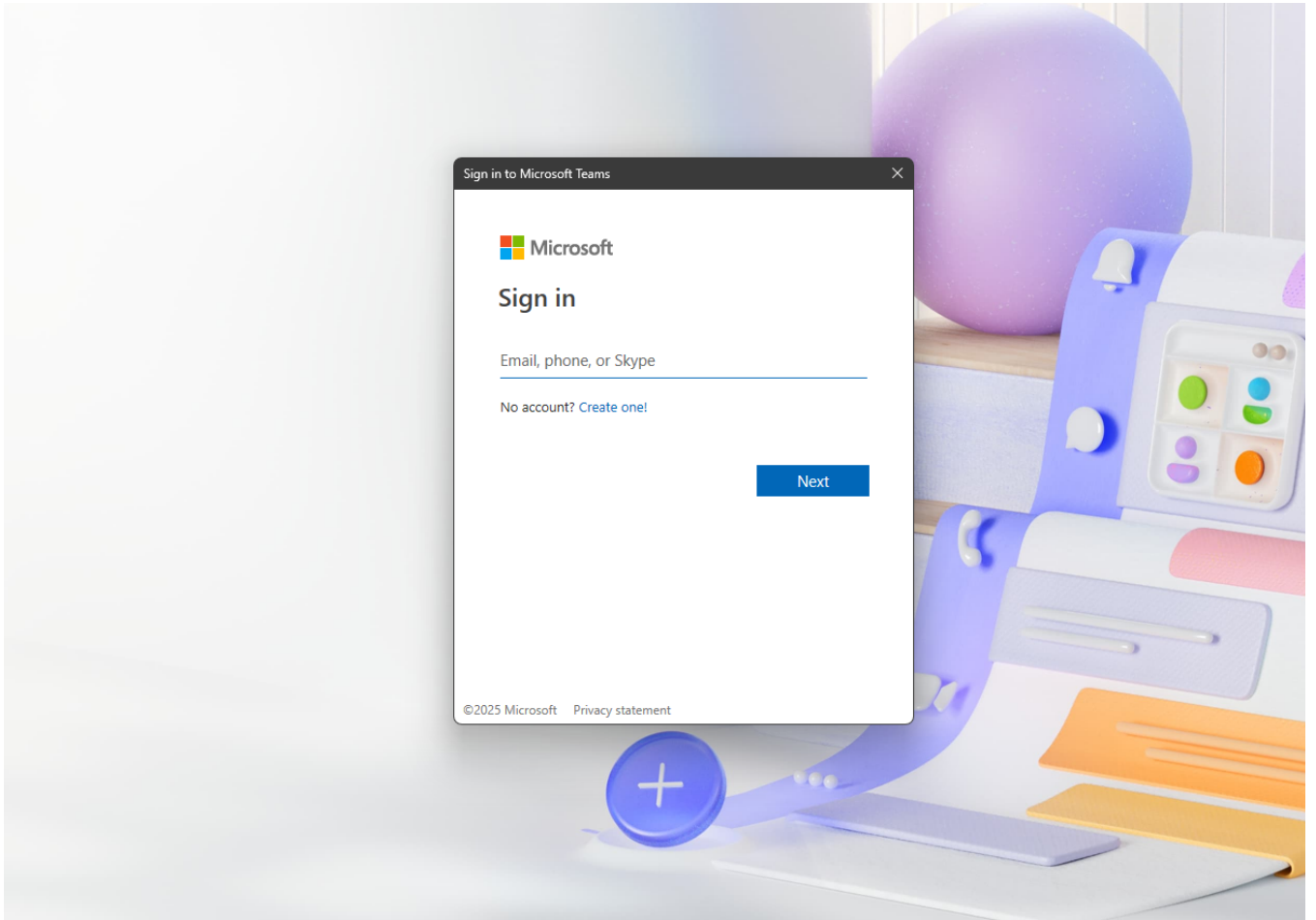
2. pilih **Sign Out**.



3. setelah sign out, klik tombol Create or use another account.



4. lakukan login akun Wikamail seperti biasa.



Revision #2

Created 8 September 2025 03:11:41 by NOVALDI RIFQI

Updated 10 November 2025 01:51:32 by NOVALDI RIFQI